

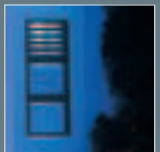
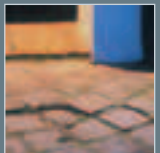
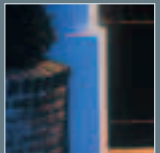
GOOZE ARCHITECTURAL
ACCESS CONTROL

CLASSIC



ONE

The CLASSIC ONE is the flush mounting version which can be built into any wall in a very quick and simple way. The CLASSIC ONE is constructed in different ways, ranging from 1 to 8 modules, with or without a letterbox.



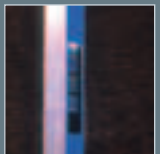
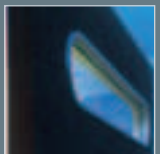
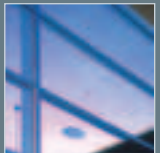
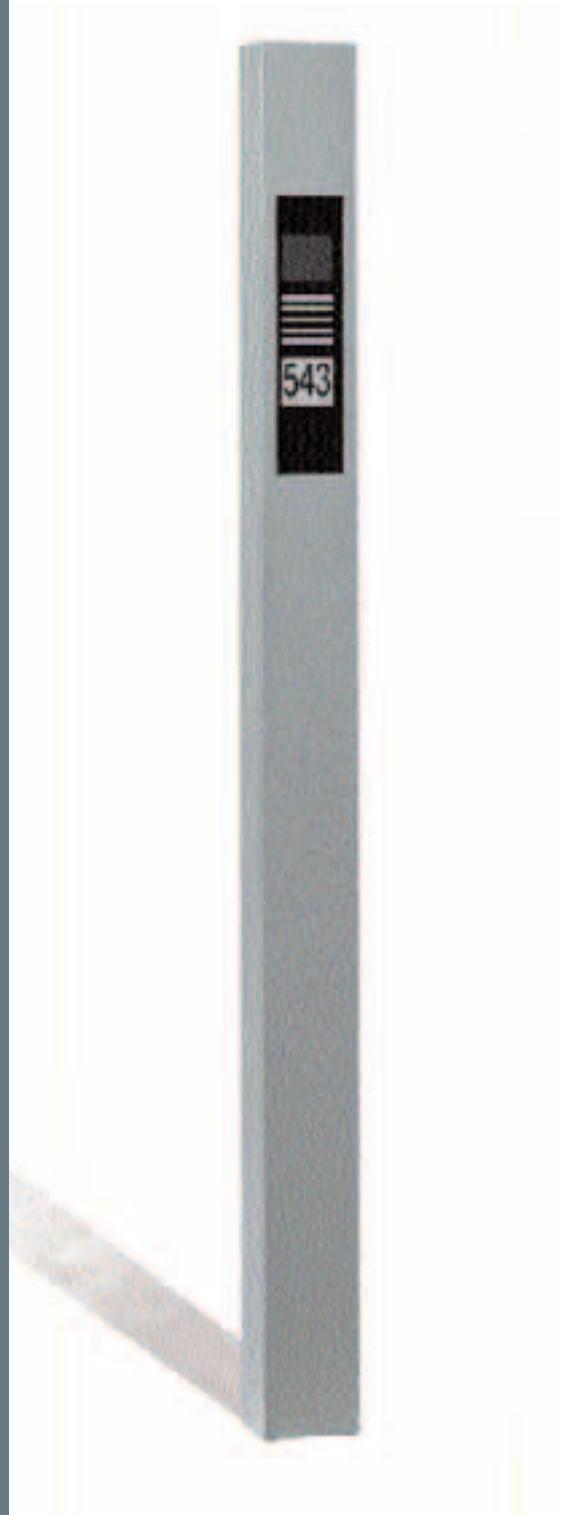
SLIM

A photograph of a modern building at dusk. The building features a dark, textured brick facade and large glass windows. A vertical light fixture stands in the foreground, and a horizontal light strip is embedded in the wall. The word 'SLIM' is written in large white letters in the top right corner.

ONE

The SLIM ONE is a slim, taut column which is attached to the ground. The standard version of this aluminium column has a lacquer coating for protection against corrosive influences.

The SLIM ONE can contain 1 to 8 modules, plus a lighting module.



SOME



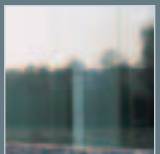
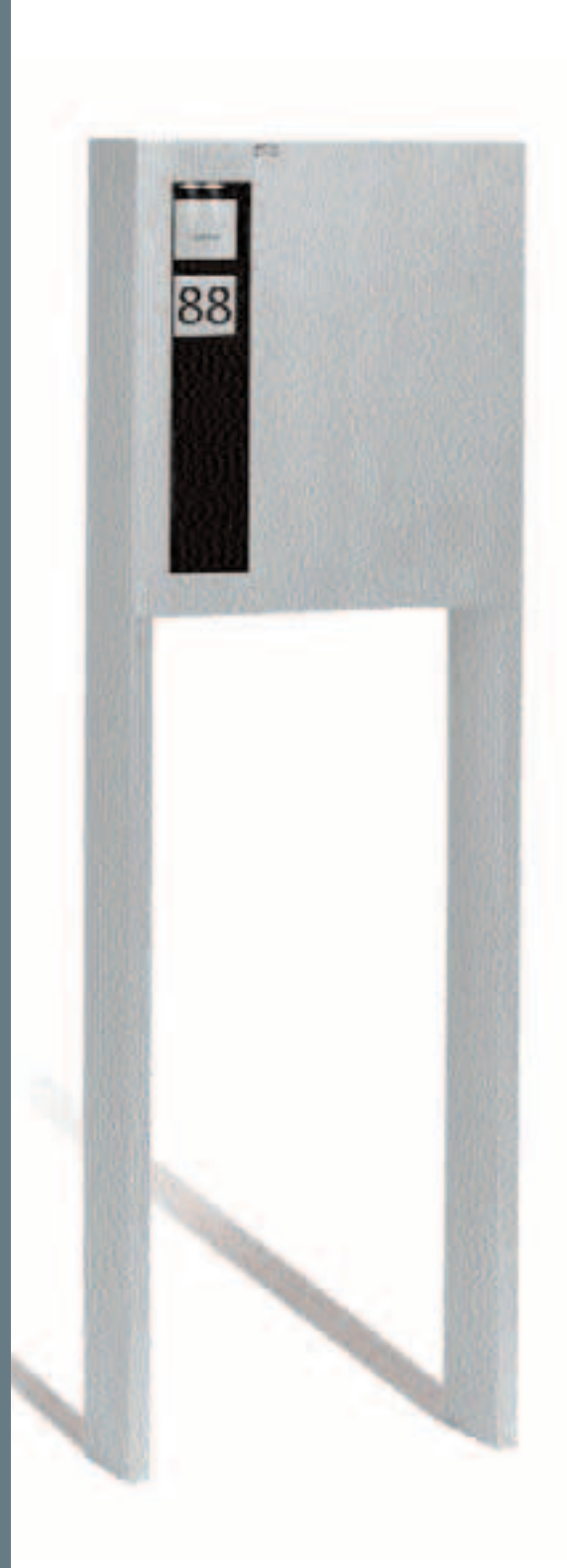
ONE

The SOME ONE is a detached letterbox that can be combined with one or more access control modules.

The letterbox has two opening positions.

In the first position the postman can open the letterbox to deposit the mail.

The second position is for the user, who can open the letterbox completely using the key module to empty the letterbox easily.

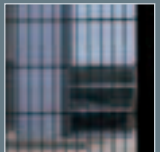
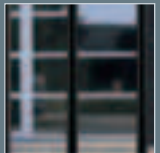
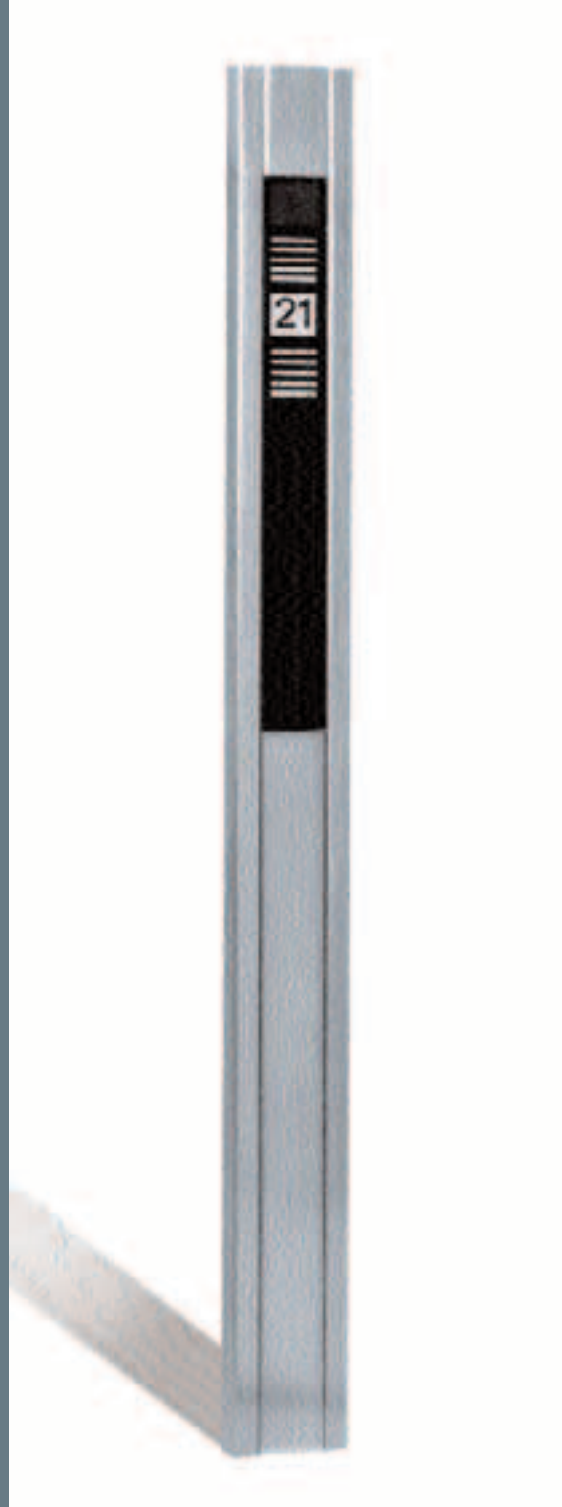


FENCE



ONE

The FENCE ONE is an aluminium access column to integrate into an enclosure and/or access gate. Just like all other types of columns of the GOOZE line, you can determine the length yourself to make the FENCE ONE fit perfectly into your enclosure. The FENCE ONE is also available with a letterbox which can be emptied at the back.



NICE



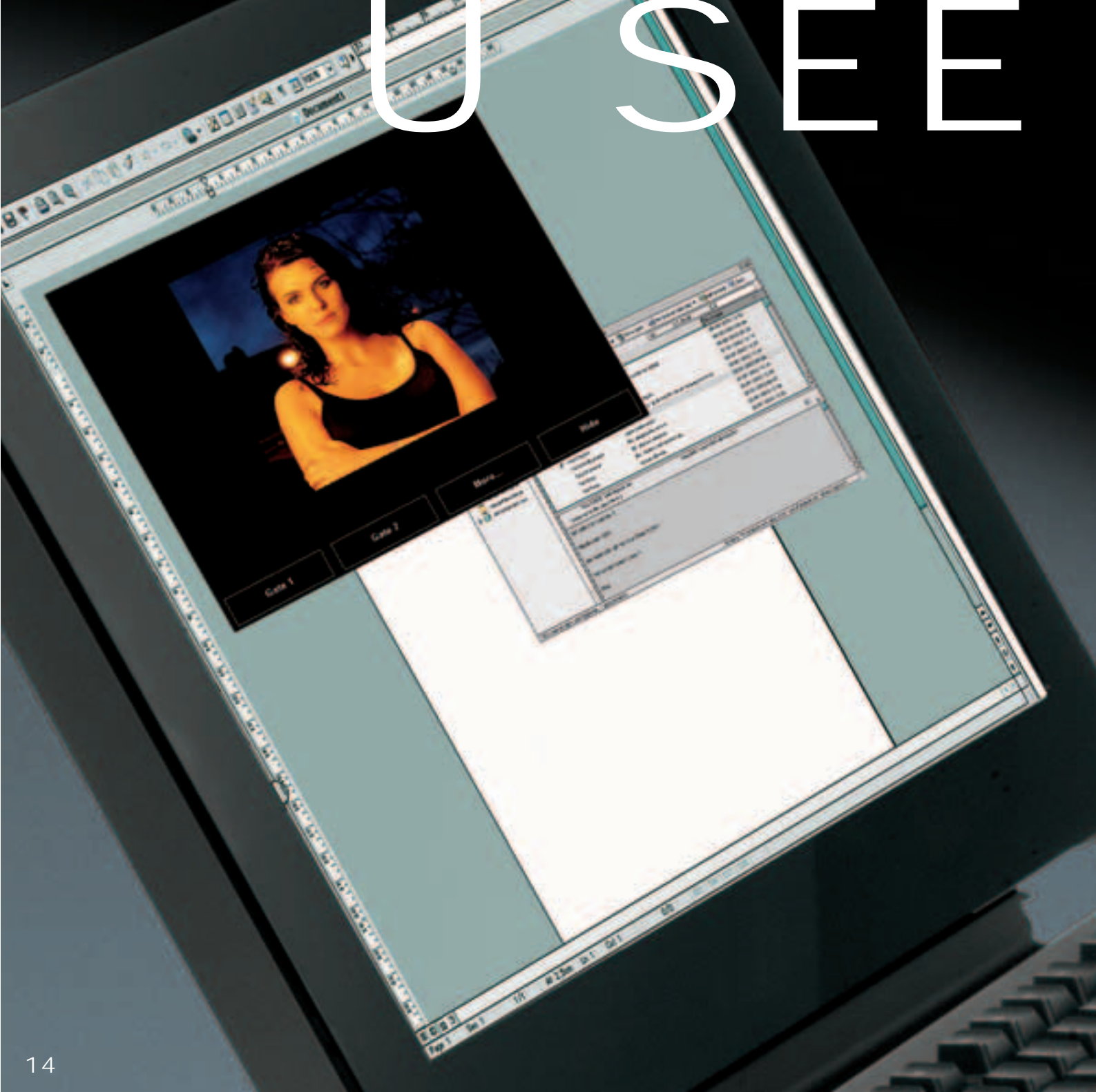
ONE

Just like the other GOOZE products, the videophone has a taut design and it is also made out of brushed and anodized aluminium on a mat black structure. It goes without saying that it has a top-level audiovisual quality. The videophone is standard made for wall mounting, but with an optional base it can be used as a table model. The NICE ONE also functions as a normal telephone.



wall-mounting

USEE



ONE

This module, combined with a professional video card and corresponding software, enables you to see your visitor on the pc screen. You simply need to click on the mouse to open the door. You can just as easily save images of the visitors on the hard disk of your computer.



TV



MOD

With the TV MODULE your visitor can now be announced on the TV screen without changing the channel.

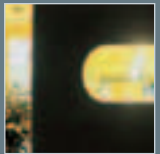
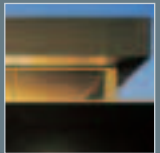
SMART

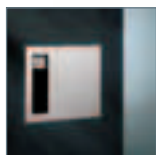


ONE

The intelligence of the GOOZE system lies in the SMART ONE interface, which sees to the communication between you and your visitor, using just one cable. The interface is connected to a free analogous line of the telephone exchange, which means that a call at the door can be answered via all appliances that are connected to this exchange. The locks can be operated via the buttons of the corresponding telephone apparatus. With the SMART ONE interface, you

can carry out the complete programming with the telephone apparatus. You are guided through the menu structure by a voice speaking the language of your choice. This way you can personalize your messages. A link between the GOOZE products and the Nikobus home automation system is also provided, which ensures an unprecedented functionality and flexibility. From now on, solutions made to measure and individualization are well-known terms!





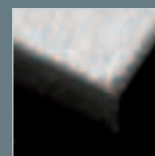


modules

An abstract geometric composition featuring three main planes. A light blue plane with a fine, vertical wood-grain texture occupies the lower-left and bottom-right areas. A solid black plane, which appears to have a fine, pebbled texture, runs diagonally across the upper-middle section. A white plane is visible in the top-right corner. The planes meet at sharp, clean edges, creating a sense of depth and architectural structure.

ONE

The GOOZE ONE modules can be obtained separately as a result of which each system can be built according to your specific (changing) needs and desires. This is why Niko can help you to integrate the latest technological possibilities at all times.



A close-up, artistic photograph of a wooden door handle and lock mechanism. The handle is made of light-colored wood with a visible grain, and the lock is a dark, metallic, ornate design. The background is a soft, out-of-focus grey.

doorbell

MOD

Doorbell I button

Aluminium version in two variants:

Type 1 bell button with aluminium button; thanks to this button you can have your house number or logo engraved.

Type 2 bell button with plexi front; thanks to this button you can provide your nameplate or house number yourself.



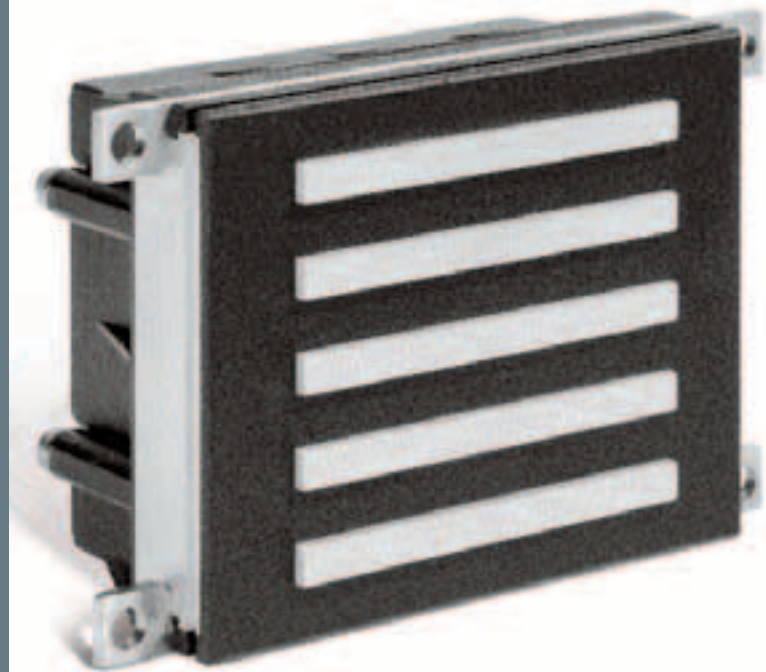
A close-up photograph of a wooden door handle and a metal grate. The handle is a light-colored wood with a vertical grain, positioned diagonally from the bottom left towards the top right. Behind it is a metal grate with horizontal bars, set against a dark background. The lighting creates strong highlights and shadows, emphasizing the textures of the wood and metal.

doorcom

MOD

Intercom Aluminium version

Intercom module with integrated loudspeaker and microphone. The sensitivity can be adjusted to the sound intensity in the environment or to the voice volume fully automatically as well as manually.



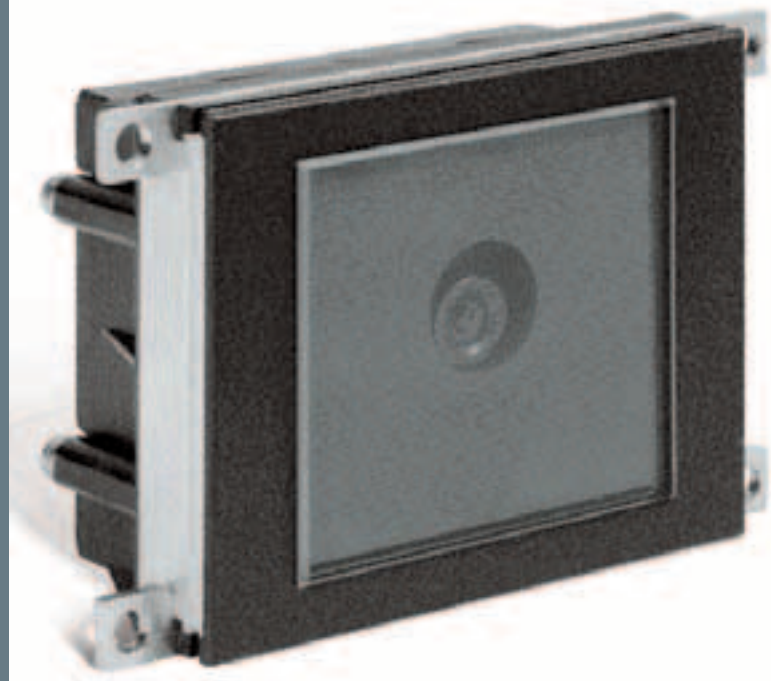
camera

MOD

Camera Aluminium version

High resolution colour camera for a perfect spectrum. Broad and adjustable angle.

Protection against vandalism by use of extra heavy plexiglass.



A close-up, shallow depth-of-field photograph of a laptop keyboard. The keys are dark and slightly blurred, while the foreground surface of the laptop is in sharp focus. The word 'codeswitch' is written in a clean, white, sans-serif font across the top of the image.

codeswitch

MOD

Codeswitch Aluminium version

Module for higher safety by means of an electric locking with PIN code. You can program up to a 100 codes.



keyswitch



MOD

Keyswitch Aluminium version

Electric locking with a key. Thanks to the use of a standard euro profile cylinder, you can use the same key on all your locks. The cylinder is protected against intruding water and dust by an aluminium hinged lid. Engraving of the house number or logo is also possible.







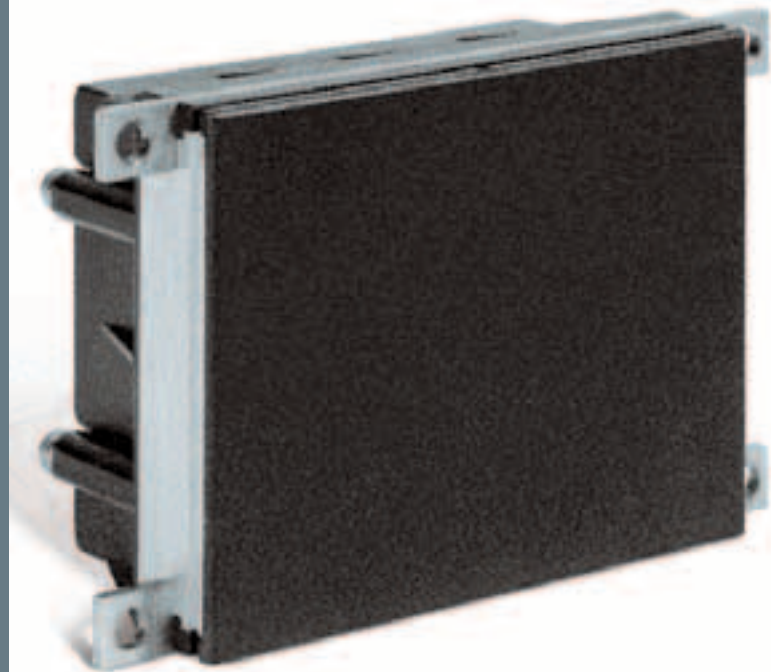
proxiswitch

An abstract, high-contrast image featuring a dark, almost black background. A prominent, curved, glowing line with a grainy, textured appearance sweeps across the frame from the lower left towards the upper right. The line has a bright, hazy core that fades into a darker, more defined edge, giving it a sense of depth and movement, like a comet tail or a light trail.

MOD

Card reader
Aluminium version

Electric locking with supplied electromagnetic
card without contact.



letterbox



MOD

Letterbox
Aluminium version

Double flap mechanism with a big opening and sealing rubber. Can be mounted on the CLASSIC ONE, FENCE ONE and SLIM ONE.



Lighting



MOD

LIGHTING MODULE ALUMINIUM VERSION

The lighting module is constructed with low-energy LEDs. These lighting modules ensure a comfort without maintenance for many years because of their life of 100,000 burning-hours. The light output is manually adjustable or it can be controlled by a light measuring cell.





Do you need some information?

Niko will help you!

The Niko-helpdesk

Tel.: +32 3 760 14 82

Fax: +32 3 777 71 20

e-mail: support@niko.be

An enthusiastic and experienced team of specialists will help and advise you on formulating the right offer or specifying the right choice of products for each project.

Niko not only delivers top-quality products, it also supports wholesalers, installers, architects, design and construction engineers when choosing and installing its products.

Do you need any documentation?

Visit the marketing services on our website www.niko.be

Here you can download and print all Niko publications.

Contact your local distributor for printed brochures and catalogues.

Niko NV
Industriepark West 40
B-9100 Sint-Niklaas
Belgium • Europe
Tel.: +32 3 760 14 70
Fax: +32 3 777 71 20
www.niko.be



ARCHITECTURAL ACCESS CONTROL