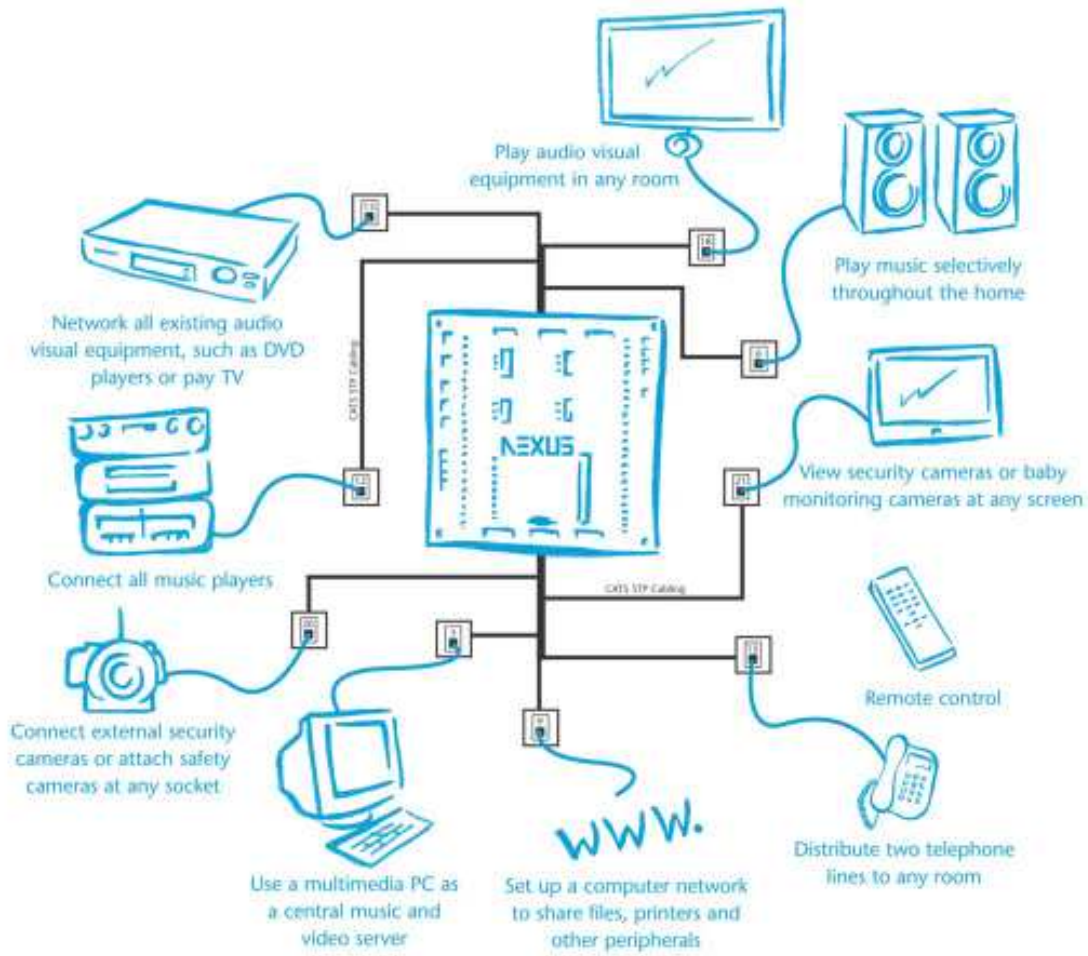




NEXUS

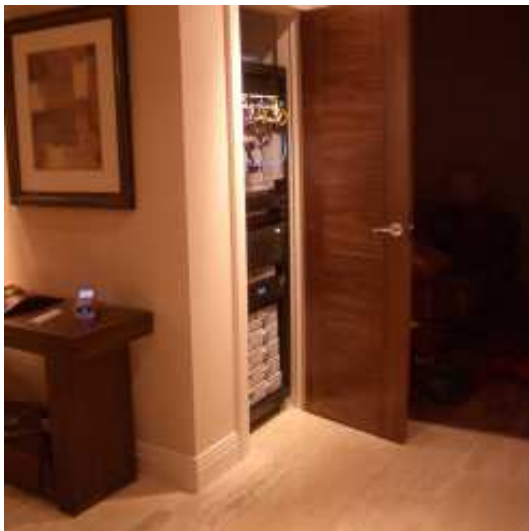
MULTIROOM AUDIO, VIDEO AND CONTROL SYSTEMS



NEXUS MULTIROOM MUSIC AND VIDEO FOR HOMES



Images of Nexus installation kindly provided by I-Solutions 5, Bournemouth.



AVNex have been designing and manufacturing Nexus Multiroom Audio and Video systems since 2001 in the UK.

Nexus hubs are designed to sit at the heart of your home, to distribute all music and video, telephony and data

Nexus systems are modular and flexible to suit your particular needs. The solution is based on an easy to install CAT5 cabling network with speaker wires to any in built speakers.

TYPICAL PLANS

These plans show a typical Nexus installation;

- a flood wired CAT5 network for any AV, telephony or networked device,
- ceiling speakers with hidden IR receivers
- flat screens mounted at high level in corners or on the wall to save space.
- a home cinema,
- control using a simple remote
- discrete corner speakers in rooms where ceiling are decorative.
- equipment cupboard.



NEXUS AV HUBS

Nexus hub routes music and video all around your house from all your AV equipment. Nexus sits at the centre of your cabling network and usually in a cupboard hidden away with all your audio and video equipment. It is modular allowing you to build a system to suit your home and it is designed to be futureproof and upgradeable as you grow. It is also simple to use giving you control of all your equipment at your fingertips.

- 6, 9, 12 or 18 rooms.
- 6, 9 or 12 AV sources (eg Satellite, Freeview, DVD or music players)
- Composite Video
- Stereo Line Level Audio



20X NEXUS MODULAR AV HUB

NEXUS AMPLIFIERS

Each speaker is powered by an amplifier. The Nexus Amps are either placed at the central hub for maximum flexibility and accessibility or in ceiling to minimise wiring.

- For central amp cable with CAT5 and 4 core speaker wire to speakers.
- For In ceiling amp wire with CAT5 to amp + local power supply.
- 15W per channel stereo amplifier.
- Nexus Modular Amp case holds 2-6 amplifiers



261 NEXUS MODULAR AMPLIFIER

NEXUS PATCH PANEL

The Nexus system uses industry standard CAT5, 5e, 6 or 7 cabling in a star configuration to a central hub. Nexus patch panel box terminates CAT5 and speaker wires.

- 8-48 CAT5 terminations
- 6-12 ceiling speaker connections
- Cable Cat5, 5e, or 6, 7 Unshielded or Shielded.



272 NEXUS PATCH PANEL

NEXUS SPEAKERS

Complement your home with in ceiling speakers. Nexus ceiling speakers have in built IR receivers for a simple elegant installation. A range of speakers are available for different situations in both stereo and home cinema configurations.



334 NEXUS IR
CORNER SPEAKER



302 NEXUS IR
CEILING SPEAKER



305 NEXUS IR WALL
SPEAKER

MULTIROOM AV SYSTEM DESIGN - FAX BACK

To help us design and quote for your e-home, please complete this form to plan your e-home and faxback to:

Fax to: AVNex Ltd, 01480 210086

Name: _____

Address: _____

Tel: _____ Email _____

NEXUS ZONES	SCREEN/TV	SPEAKER	CINEMA	TEL	NETWORKED PC	HUB LOCATION	NO OF CAT5	NOTES	NEXUS SOURCES
What would you like in each room?								Eg type of speaker	What sources would you like to connect to Nexus?
LIVING ROOM									FREEVIEW TV
CINEMA ROOM									SAT OR CABLE TV
DINING ROOM									DVD PLAYER
KITCHEN									CD
HALL									RADIO TUNER
STUDY									MUSIC SERVER
BATHROOM									PC MEDIA CENTRE
MASTER BEDROOM									CAMERA
ENSUITE									OTHER
BEDROOM 2									TOTAL
BEDROOM 3									
BEDROOM 4									
BEDROOM 5									
TOTAL									

Comments:

DESIGNED AND MANUFACTURED BY:

AVNEX LTD,

Columbus House, Alington Road
Little Barford, St Neots, PE19 6WL

Email: info@avnex.co.uk

Web: www.avnex.co.uk

Please call Alan Martin on 0845 4582505 for advice.

INSTALLER DETAILS

